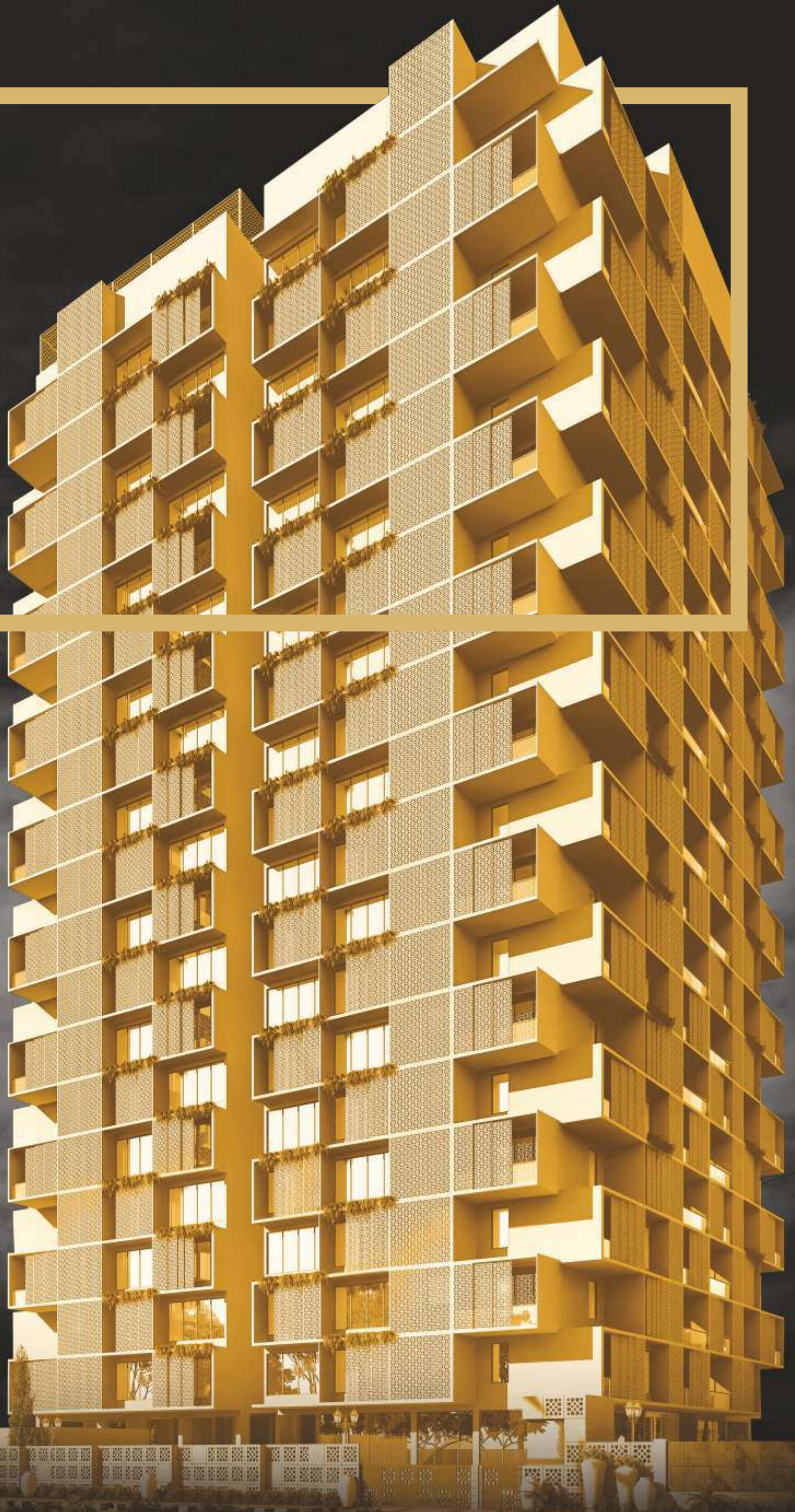


Tranquil yet  
Exhilarating!

We welcome you  
to the symbol  
of an exclusive  
lifestyle



Created with unmatched quality standards in a contemporary architectural style keeping all tastes in mind, Mundra Elite has everything for everyone. Loaded with amenities that are rare to see, Mundra Elite gives you an opportunity to live life as it was intended to be.

Architecture  
that speaks about  
the choices  
you make  
in life



# Welcome to the lane of elites

It's time for Udaipur to have its own royal lifestyle destination that matches the pride, honour and lustre of its rich heritage and outshines the global standards of luxury living. Snuggled in the heart of Udaipur, Mundra Elite will put an end to your long-drawn search for that lane of the elites.

Furnished with extravagant living choices and outstanding elevation to welcome your highness, Mundra Elite is a royal abode clad in exorbitant class and finesse. Mundra Elite is a heavenly escape for you to breathe in a new ultramodern living experience.

Higher than aspirations, richer than experiences.

Welcome to Mundra Elite.  
Step into your elite life.





Enter into a  
state of  
instant tranquility

The medley of warm colours and regality of the intrinsic design and finish are sure to transport you to a state of instant tranquillity from the very minute you enter *Mundra Elite*.



The epitome  
of indulgence



Mundra Elite is an ideal place for people committed to pure living. It's an outcome of the latest concepts in modern life. Look into any of the apartment and its open-air design will give you a feeling of spaciousness. Each unit is designed keeping in mind the ease, comfort and functional ability. Come to the balcony, and you will rediscover the scenic beauty of the magnanimous Aravali Hills that await you.

Life in  
between the  
two best  
things





Home is where your story begins







It's not about a few acres;  
it's about over a trillion  
awe-inspiring inches



It's not about creating homes; it's about designing living spaces that fulfil your desire by keeping your conditions in mind. Each apartment at Mundra Elite has been developed inch for inch. Every inch extended here speaks the language of finery and panache. Every corner pushes the benchmark a few notches higher. That's why every time you step into your home, it's going to be a feeling par excellence.



Home  
was never about  
what lies  
within the  
four walls



As you walk through paved roads and lush green surroundings, you will feel engulfed in pure elegance. And as your senses light up, your eagerness is answered with the sense of pride.



A healthy  
mind inspires  
a healthy life



Active participation beyond mere leisure is what we define entertainment as. From games to music, dancing to reading to a mini theatre, we have it all. Also present is a special play area for the kids.



Space that will light up your senses



Safety and security is our foremost focus. An elaborate, intricate and digitalised 24X7 security system will ensure that no trespasser can intrude into your environment.

We do not believe in anyone else when we talk about managing and maintaining the property. As a responsible developer, we will be professionally handling the society all the time for its proper upkeep. There would also be professional organisations that would provide concierge services to help you out with your daily errands as and when you require.

Let the  
surrounding peace  
make you feel  
at home



24X7 Security



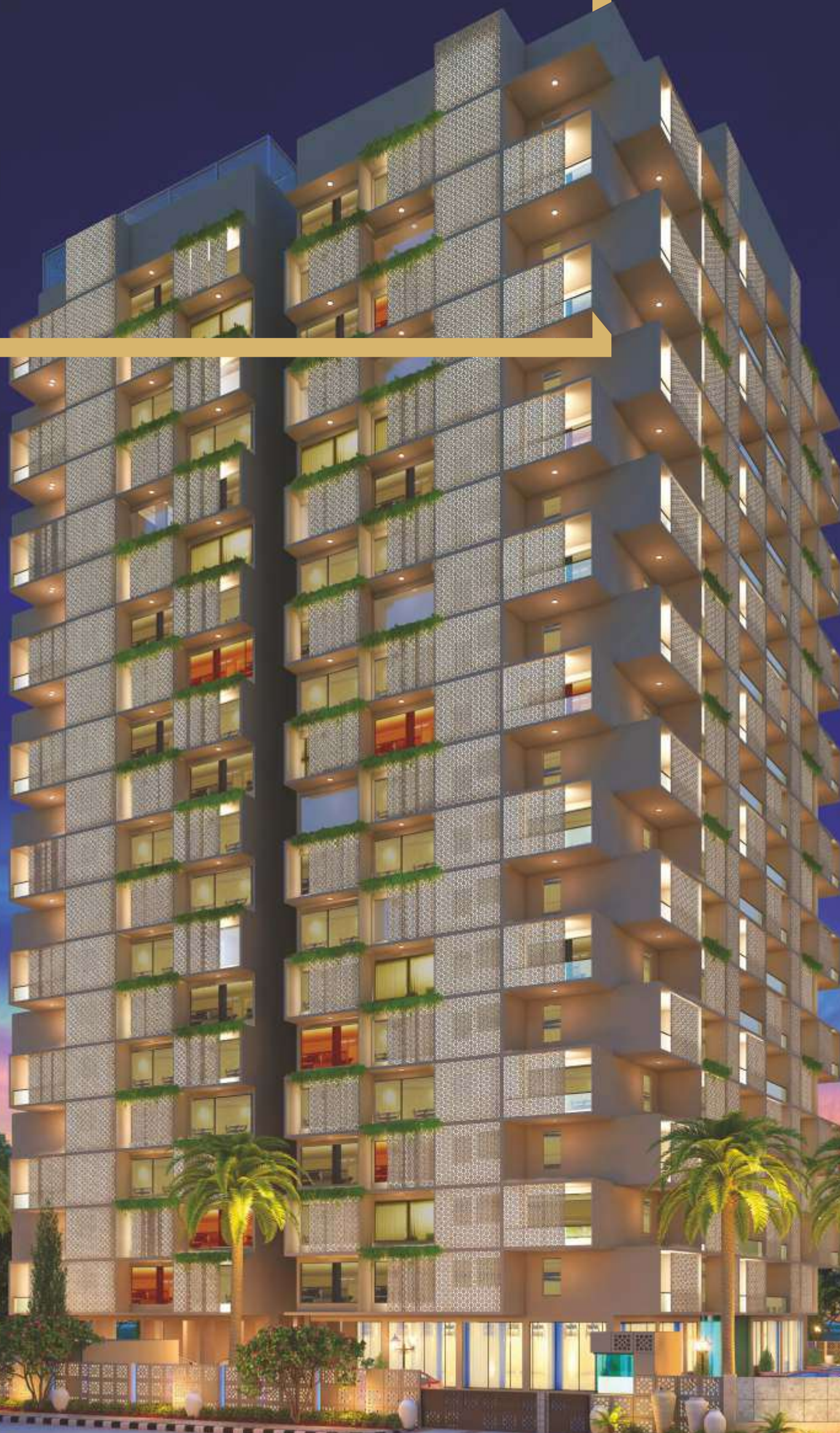
Concierge Service  
(On Society Pay)



Developer Backed  
Maintenance  
(Upto 5 Years)



Embrace royalty;  
experience  
indulgence



# Campus Layout



NO.	SPACE
1	BUILDING ENTRANCE
2	RECEPTION
3	LOBBY
4	MINI THEATER - 15 SEATER
5	GAME ZONE
6	MULTIPURPOSE HALL

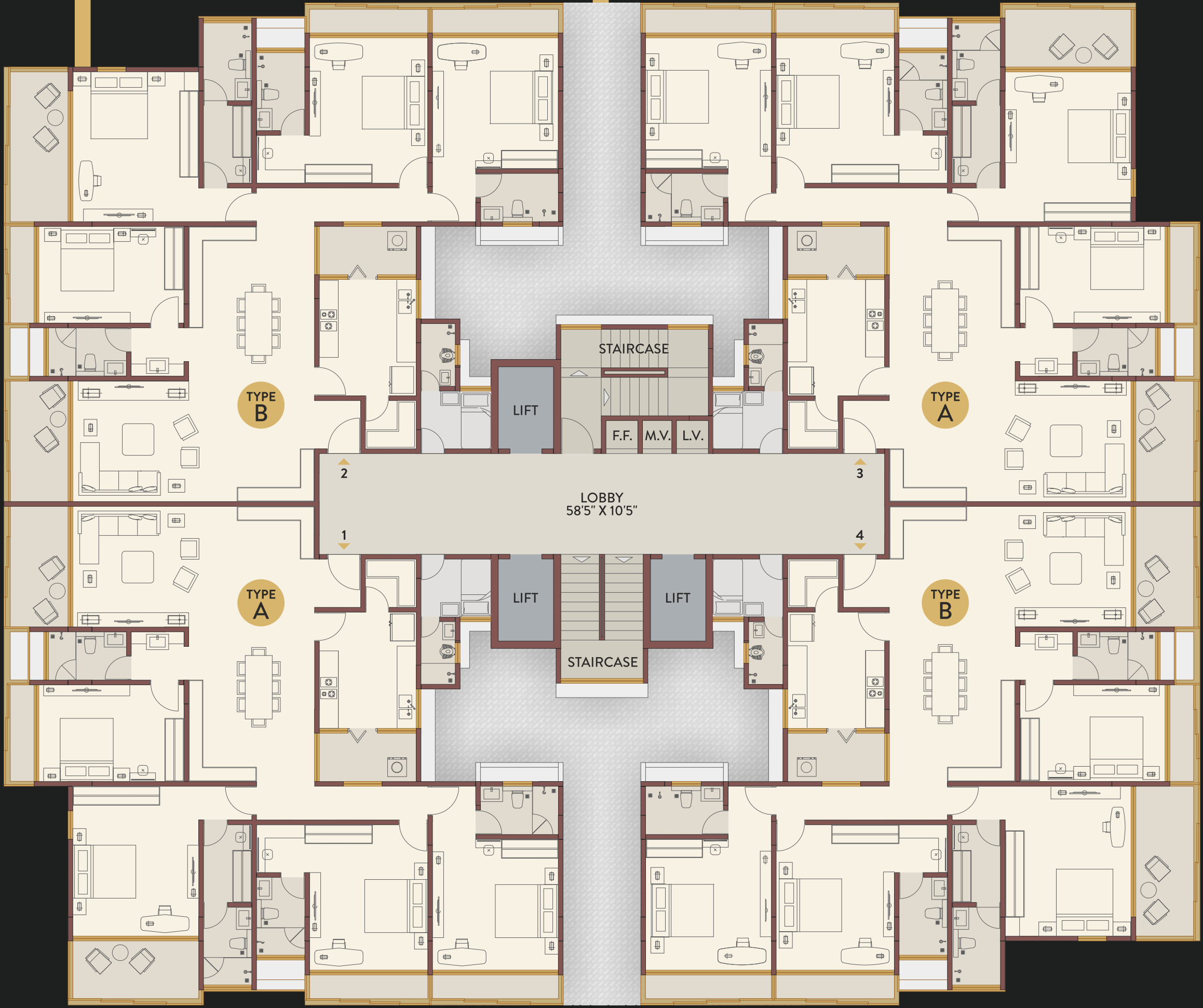
NO.	SPACE
7	KITCHEN AREA
8	POWDER TOILET
9	GYMNASIUM
10	CHANGING ROOM
11	TEMPLE
12	CYCLE / JOGGING TRACK

NO.	SPACE
13	BASEMENT RAMP
14	LIFTS
15	STAIRCASES
16	METER ROOM
17	GARDEN
18	SECURITY CABINS

NO.	SPACE
19	CAR PARKING
20	TWO WHEELER PARKING
21	WIDE PASSAGE
22	WIDE DRIVEWAY
23	CAMPUS ENTRY / EXIT
24	SENIOR CITIZEN GAZEBO
25	CHILDREN PLAY AREA



# Plan - Odd Floor

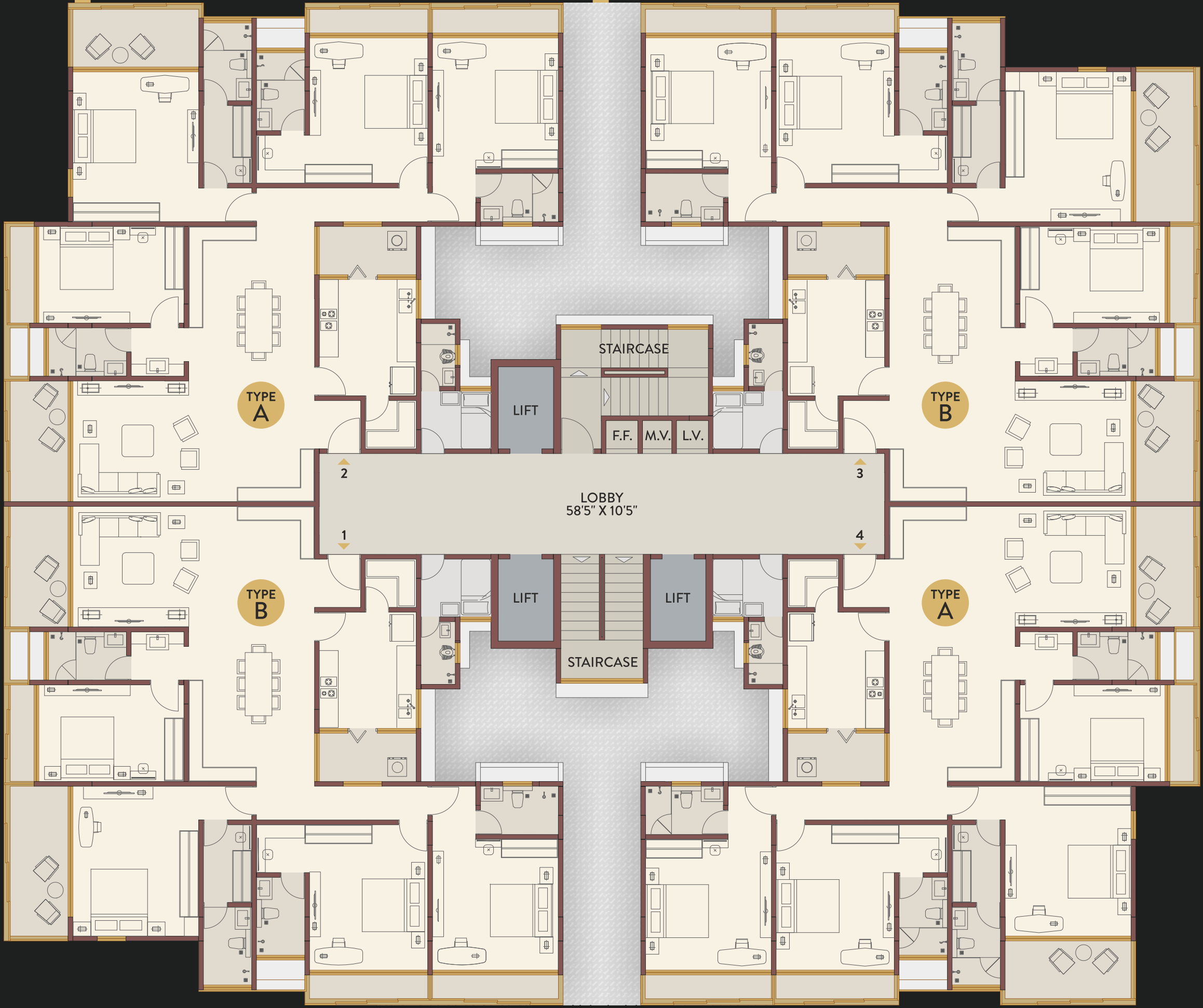


100 FEET ROAD





# Plan - Even Floor



100 FEET ROAD

# Type A

SUPER BUILT UP AREA: 3350 Sq. Ft.



NO.	SPACE	DIMENSIONS (FT)
1	ENTRANCE FOYER	4'9" X 5'
2	LIVING ROOM	25' X 12'6"
3	LIVING ROOM BALCONY	6' X 12'6"
4	DINING AREA	13' X 16'
5	KITCHEN	10' X 12'
6	STORE	5'3" X 5'
7	DRY BALCONY	10'6" X 5'
8	BEDROOM - 1	15' X 10'
9	FLOWER BED	10' X 2'5"

NO.	SPACE	DIMENSIONS (FT)
10	COMMON TOILET	5' X 8'1"
11	COMMON WASHBASIN	5' X 5'5"
12	BEDROOM - 2	13' X 15'6"
13	BED 2 - DRESS	5' X 8'1"
14	BED 2 - TOILET	5' X 8'1"
15	BED 2 - BALCONY	13'6" X 6'
16	BEDROOM - 3	12'3" X 15'
17	BED 3 - DRESS	5' X 5'1"
18	BED 3 - TOILET	5' X 8'1"

NO.	SPACE	DIMENSIONS (FT)
19	FLOWER BED	12'3" X 2'5"
20	BEDROOM - 4	13' X 13'6"
21	BED 4 - TOILET	5' X 8'6"
22	FLOWER BED	13' X 2'5"
23	SERVANT ROOM	6'9" X 6'
24	SERVANT TOILET	6'6" X 3'7"
25	PASSAGES + DOOR SILL	63.22 SQ. FT.
26	DUCTS	

# Type B

SUPER BUILT UP AREA: 3360 Sq. Ft.



NO.	SPACE	DIMENSIONS (FT)
1	ENTRANCE FOYER	4'9" X 5'
2	LIVING ROOM	25' X 12'6"
3	LIVING ROOM BALCONY	6' X 12'6"
4	DINING AREA	13' X 16'
5	KITCHEN	10' X 12'
6	STORE	5'3" X 5'
7	DRY BALCONY	10'6" X 5'
8	BEDROOM - 1	15' X 10'
9	FLOWER BED	10' X 2'6"

NO.	SPACE	DIMENSIONS (FT)
10	COMMON TOILET	5' X 8'1"
11	COMMON WASHBASIN	5' X 5'6"
12	BEDROOM - 2	13' X 15'6"
13	BED 2 - DRESS	5' X 8'1"
14	BED 2 - TOILET	5' X 8'1"
15	BED 2 - BALCONY	15'6" X 6'
16	BEDROOM - 3	12'3" X 15'
17	BED 3 - DRESS	5' X 5'1"
18	BED 3 - TOILET	5' X 8'1"

NO.	SPACE	DIMENSIONS (FT)
19	FLOWER BED	12'3" X 2'5"
20	BEDROOM - 4	13' X 13'6"
21	BED 4 - TOILET	5' X 8'6"
22	FLOWER BED	13' X 2'5"
23	SERVANT ROOM	6'9" X 6'
24	SERVANT TOILET	6'6" X 3'7"
25	PASSAGES + DOOR SILL	63.22 SQ. FT.
26	DUCTS	

# Section Plan





# Location Map



## Special Features

**75%**  
Open Area

**21**  
Storeyed Building

**4 BHK**  
Uber Luxurious Abode

  
Developer Backed Maintenance (Upto 5 Years)

  
3 Side Roads

  
Servant Room

## Near By's

  
Hospital

  
Airport

  
Shopping Mall

  
School

  
200ft Ring Road

  
Hill View

  
Temple

  
Restaurant

## AMENITIES

### STILT FLOOR

#### TRACKS

- JOGGING TRACK
- CYCLING TRACK
- GARDEN

#### SITTING SPACES

- SENIOR CITIZEN GAZEBO
- DESIGNER STREET BENCHES
- LANDSCAPE VIEW SIT OUT

#### CLUB HOUSE

##### GYMNASIUM

##### ENTERTAINMENT

- INDOOR GAMES
- POOL TABLE
- TABLE TENNIS
- CARROM
- CHESS

##### TEMPLE

##### MINI THEATRE

### TERRACE FLOOR

#### HEALTH CENTRE

- ADULT SWIMMING POOL
- KIDS SWIMMING POOL
- CHANGING ROOMS
- HEALTH BAR

#### OUTDOOR GAMES

- NET CRICKET PITCH

# General Specifications

## Internal Finishes

PARTICULARS	DESIGN, FINISHES, AMENITIES AND SPECIFICATION
<b>FOYER AREA</b>	
FLOORING	IMPORTED MARBLE
MAIN DOOR	veneer finished door with matte polish
<b>LIVING ROOM AREA</b>	
FLOORING	IMPORTED MARBLE
WINDOW	ALUMINIUM ANNO DIZED OPENABLE WINDOW
<b>BALCONY</b>	
FLOORING	PREMIUM ANTI-SKID VITRIFIED TILES
RAILING	MS. HAND RAIL WITH TOUGHENED GLASS
<b>COMMON TOILET</b>	
FLOORING	PREMIUM ANTI-SKID VITRIFIED TILES
DOOR	30 MM LAMINATED FLUSH DOOR
WINDOW	ALUMINIUM ANNO DIZED OPENABLE WINDOW
DADO TILES	PREMIUM VITRIFIED TILES
GRANITE FOR WASHBASIN PLATFORM	PREMIUM GRANITE
<b>KITCHEN AREA</b>	
FLOORING	IMPORTED MARBLE
DOOR	30 MM LAMINATED FLUSH DOOR
WINDOW	ALUMINIUM ANNO DIZED SLIDING WINDOW
DADO TILES	PREMIUM VITRIFIED TILES
GRANITE FOR PLATFORM	PREMIUM GRANITE / QUARTZ
<b>BALCONY</b>	
FLOORING	PREMIUM ANTI-SKID VITRIFIED TILES
RAILING	MS. HAND RAIL WITH TOUGHENED GLASS
<b>STORE ROOM</b>	
FLOORING	PREMIUM VITRIFIED TILES
DOOR	30 MM LAMINATED FLUSH DOOR
<b>BEDROOM 1</b>	
FLOORING	IMPORTED MARBLE
DOOR	30 MM LAMINATED FLUSH DOOR
WINDOW	ALUMINIUM ANNO DIZED SLIDING WINDOW
<b>BEDROOM 2 WITH DRESSER</b>	
FLOORING	IMPORTED MARBLE
DOOR	30 MM LAMINATED FLUSH DOOR
WINDOW 1	ALUMINIUM ANNO DIZED SLIDING WINDOW
WINDOW 2	ALUMINIUM ANNO DIZED OPENABLE WINDOW
<b>BALCONY</b>	
FLOORING	PREMIUM ANTI-SKID VITRIFIED TILES
RAILING	MS. HAND RAIL WITH TOUGHENED GLASS

## External Finishes

PARTICULARS	DESIGN, FINISHES, AMENITIES AND SPECIFICATION
<b>GENERAL LOBBY AREA</b>	
FLOORING	PREMIUM VITRIFIES TILES/GRANITE
<b>STAIRCASE</b>	
FLOORING	PREMIUM GRANITE
WINDOW	ALUMINIUM ANNO DIZED WINDOW
<b>PLASTERING WORK</b>	
INTERNAL WALLS	GYPSUM PLASTER WORK
EXTERNAL WALLS	CEMENT PLASTER WORK
<b>PAINTING</b>	
(FLAT + SERVANT) INTERNAL WALLS	ACRYLIC PAINT
LOBBY	ACRYLIC PAINT
<b>BATHROOM</b>	
CPVC, PVC & OTHER PLUMBING FITTINGS	ASHIRVAD / ASTRAL
CP FITTINGS, SANATARY & OTHER BATH FITTINGS	KOHLER / GROHE / JAQAR
<b>ELECTRICAL</b>	
PVC PIPE, FIXTURES & OTHER ELECTRICAL FITTINGS	HAVELL'S / LEGRAND / FINOLEX
SWITCHES	LEGRAND, HAVELL'S

PARTICULARS	DESIGN, FINISHES, AMENITIES AND SPECIFICATION
<b>TOILET</b>	
FLOORING	PREMIUM ANTI SKID VITRIFIED TILES
DOOR	30 MM LAMINATED FLUSH DOOR
WINDOW	ALUMINIUM ANNO DIZED OPENABLE WINDOW
DADO TILES	PREMIUM VITRIFIED TILES
<b>DRESSER</b>	
FLOORING	IMPORTED MARBLE
DOOR	30 MM LAMINATED FLUSH DOOR
<b>BEDROOM 3 WITH DRESSER</b>	
FLOORING	IMPORTED MARBLE
DOOR	30 MM LAMINATED FLUSH DOOR
WINDOW	ALUMINIUM ANNO DIZED SLIDING WINDOW
<b>TOILET</b>	
FLOORING	PREMIUM ANTI SKID VITRIFIED TILES
DOOR	30 MM LAMINATED FLUSH DOOR
WINDOW	ALUMINIUM ANNO DIZED OPENABLE WINDOW
DADO TILES	100% PREMIUM ANTI SKID VITRIFIED TILES
<b>BEDROOM 4</b>	
FLOORING	IMPORTED MARBLE
DOOR	30 MM LAMINATED FLUSH DOOR
WINDOW	ALUMINIUM ANNO DIZED SLIDING WINDOW
<b>TOILET</b>	
FLOORING	PREMIUM ANTI SKID VITRIFIED TILES
DOOR	30 MM LAMINATED FLUSH DOOR
WINDOW	ALUMINIUM ANNO DIZED OPENABLE WINDOW
DADO TILES	PREMIUM VITRIFIED TILES
<b>SERVANT ROOM</b>	
FLOORING	PREMIUM VITRIFIED TILES
DOOR	DESIGNER LAMINATED FLUSH DOOR
WINDOW	ALUMINIUM ANNO DIZED OPENABLE WINDOW
<b>TOILET</b>	
FLOORING	ANTI-SKID VITRIFIED TILES
DOOR	30 MM LAMINATED FLUSH DOOR
WINDOW	ALUMINIUM ANNO DIZED OPENABLE WINDOW
DADO TILES	PREMIUM ANTI - SKID VITRIFIED TILES
<b>AIR CONDITIONERS (VRF)</b>	
IN ALL FLATS & MAIN ENTRANCE LOBBY	COPPER PIPING & WIRING ALONG WITH OUTDOOR UNIT WILL BE PROVIDED (TOSHIBA / O-GENERAL / DAIKIN)
CLUBHOUSE	MITSUBISHI / DAIKIN
<b>HARDWARE</b>	
	HETTICH / HAFALE / GODREJ
<b>PANELS FOR ELEVATION FEATURE</b>	
FIXED & SLIDING	GFRC (GLASS FIBRE REINFORCED CONCRETE) PANELS
<b>ELEVATOR</b>	
HIGH SPEED ELEVATOR	MITSUBISHI / SCHINDLER / OTIS
<b>SECURITY</b>	
	24*7 CCTV SURVEILLANCE EPBAX CONNECTIVITY IN ALL FLATS
<b>DIESEL GENERATOR</b>	
	24*7 POWER BACKUP IN COMMON AREAS - KIRLOSKAR / CUMMINS
<b>STP</b>	
	AS PER REQUIRED CAPACITY
<b>FIRE HYDRANT SYSTEM</b>	
	AS PER NBC NORMS

NOTE: Brands may be substituted by equivalent brands in case of non-availability of products or any other reason.

PRINCIPAL ARCHITECT



**PROJECT BY:**



**Office Address**

Plot No.45, 100 Feet Road, Bhuwana,  
Udaipur, Rajasthan - 313001, India.

**Contact Details**

+91 93588 74785

**Website**

[www.mundrarealty.com](http://www.mundrarealty.com)

**E-mail**

[info@mundrarealty.com](mailto:info@mundrarealty.com)

  [@mundradevelopers](https://www.instagram.com/mundradevelopers)

RERA Registration Number: RAJ/P/2019/894  
[www.rera.rajasthan.gov.in](http://www.rera.rajasthan.gov.in)